

0 0.25 0.5
 Mile

This map was compiled by Lewis County Geographic Information Services. The accuracy of the map has not been verified and should be used for reference purposes only.

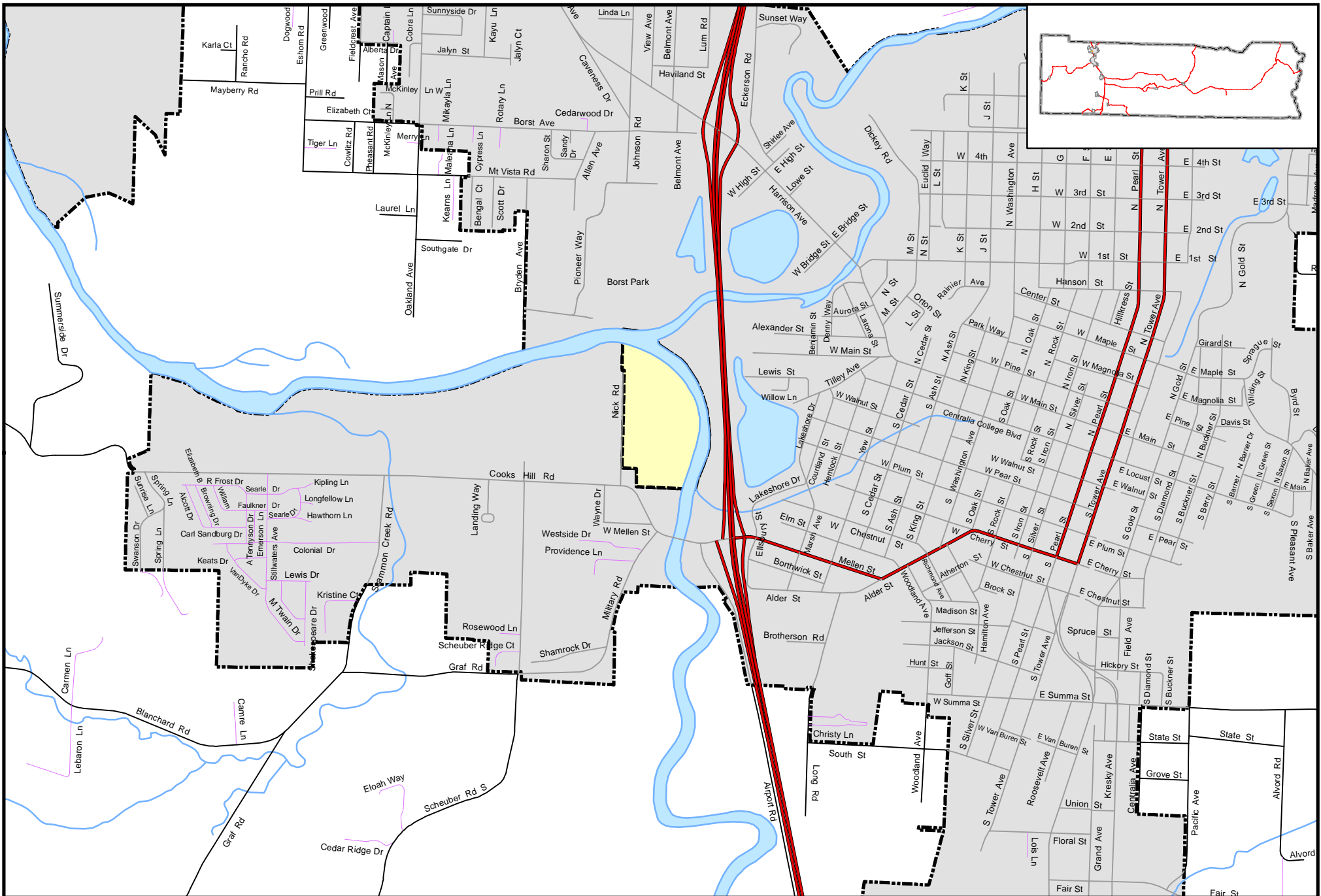
Lewis County Freeholder Districts

Commissioner District #1 - Subdistrict #5

- Precincts in Subdistrict**
- 033 - Mellen
 - 044 - Roswell
 - 103 - Centralia #3
 - 104 - Centralia #4
 - 105 - Centralia #5
 - 107 - Centralia #7
 - 109 - Centralia #9



Date: 04/27/2018



This map was compiled by Lewis County Geographic Information Services. The accuracy of the map has not been verified and should be used for reference purposes only.

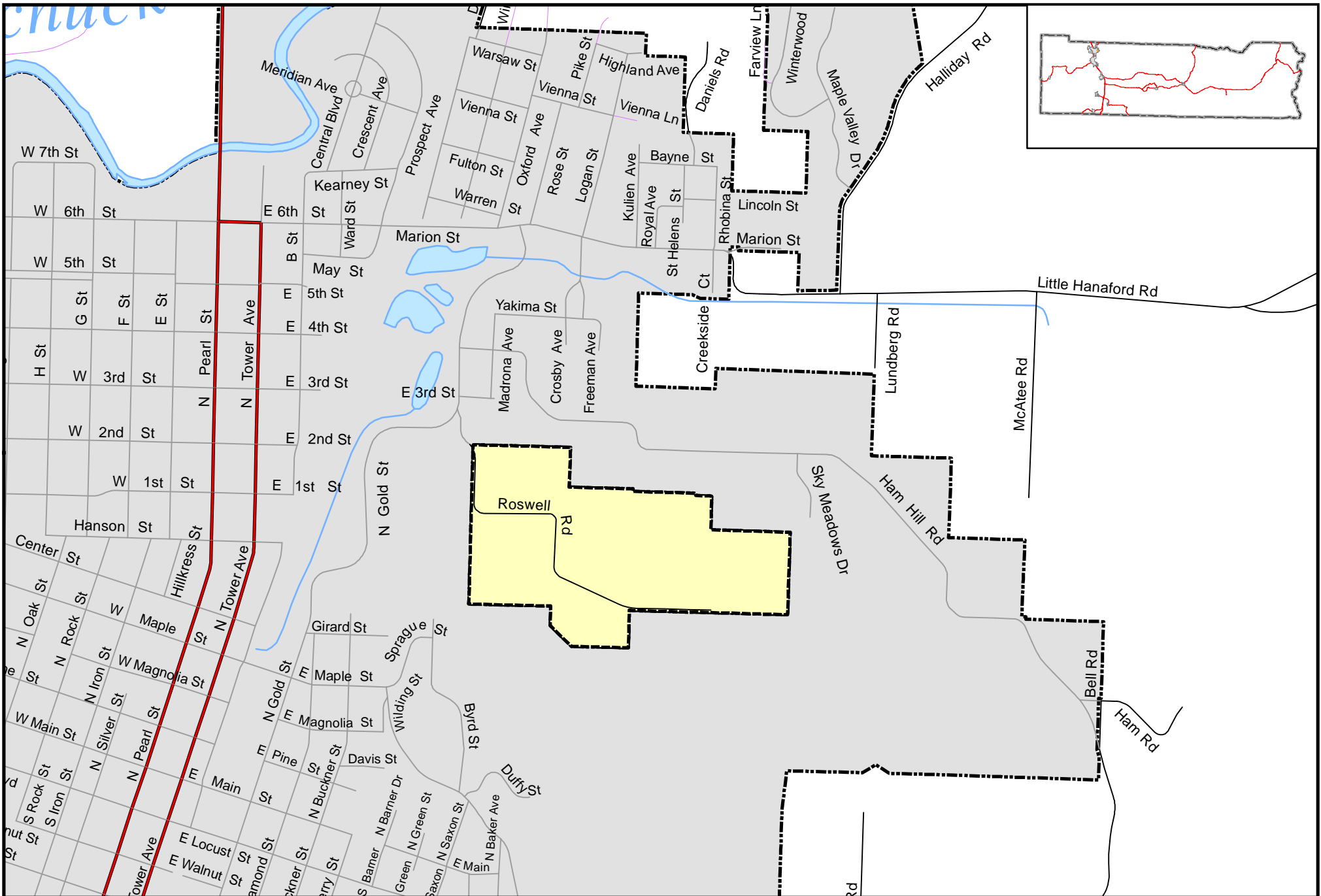
Lewis County Voting Districts

Mellen

0 0.25 0.5 0.75 1 Miles



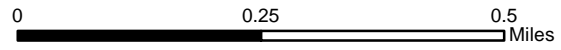
August 2012



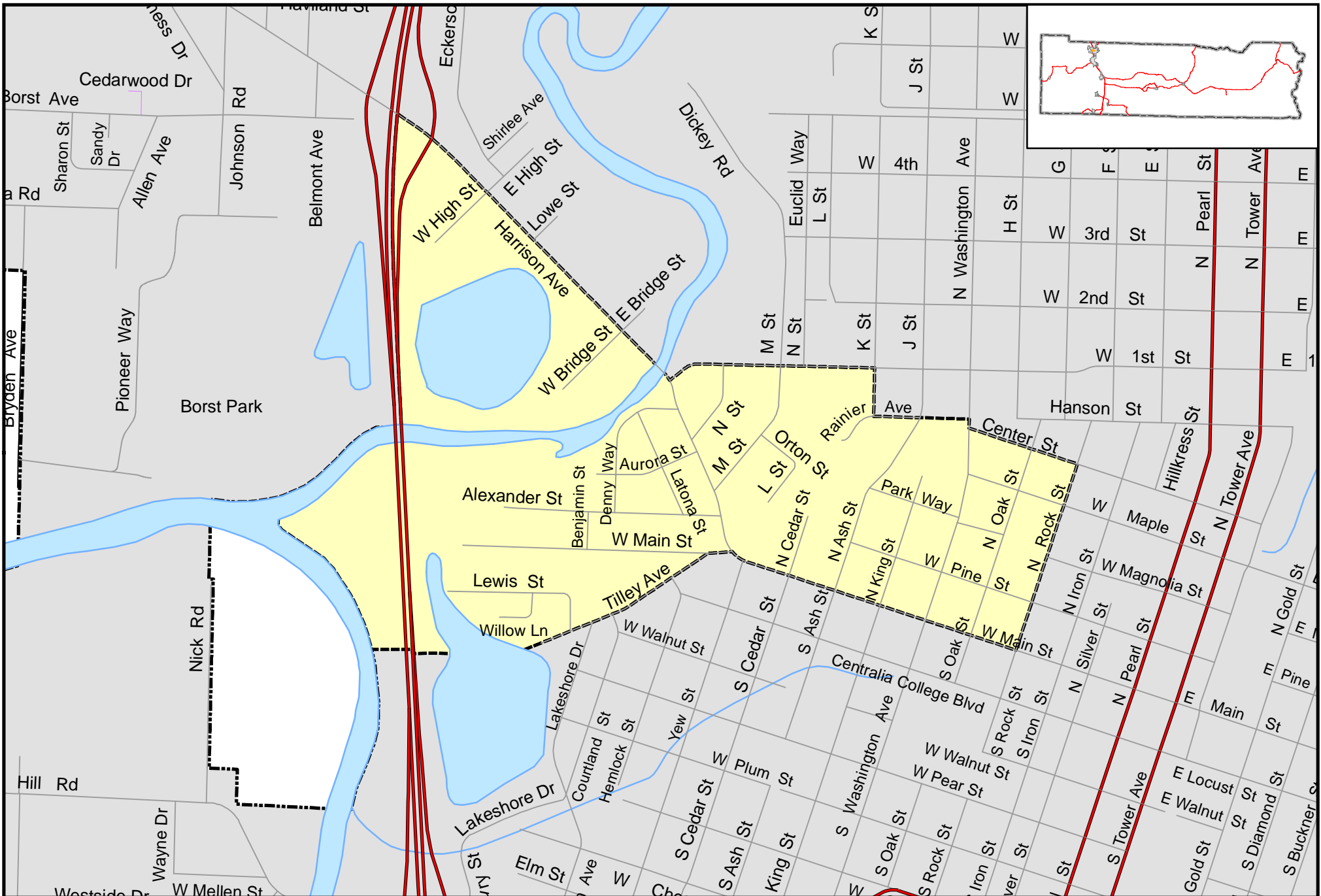
This map was compiled by Lewis County Geographic Information Services. The accuracy of the map has not been verified and should be used for reference purposes only.

Lewis County Voting Districts

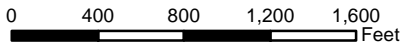
Roswell



August 2012



This map was compiled by Lewis County Geographic Information Services. The accuracy of the map has not been verified and should be used for reference purposes only.

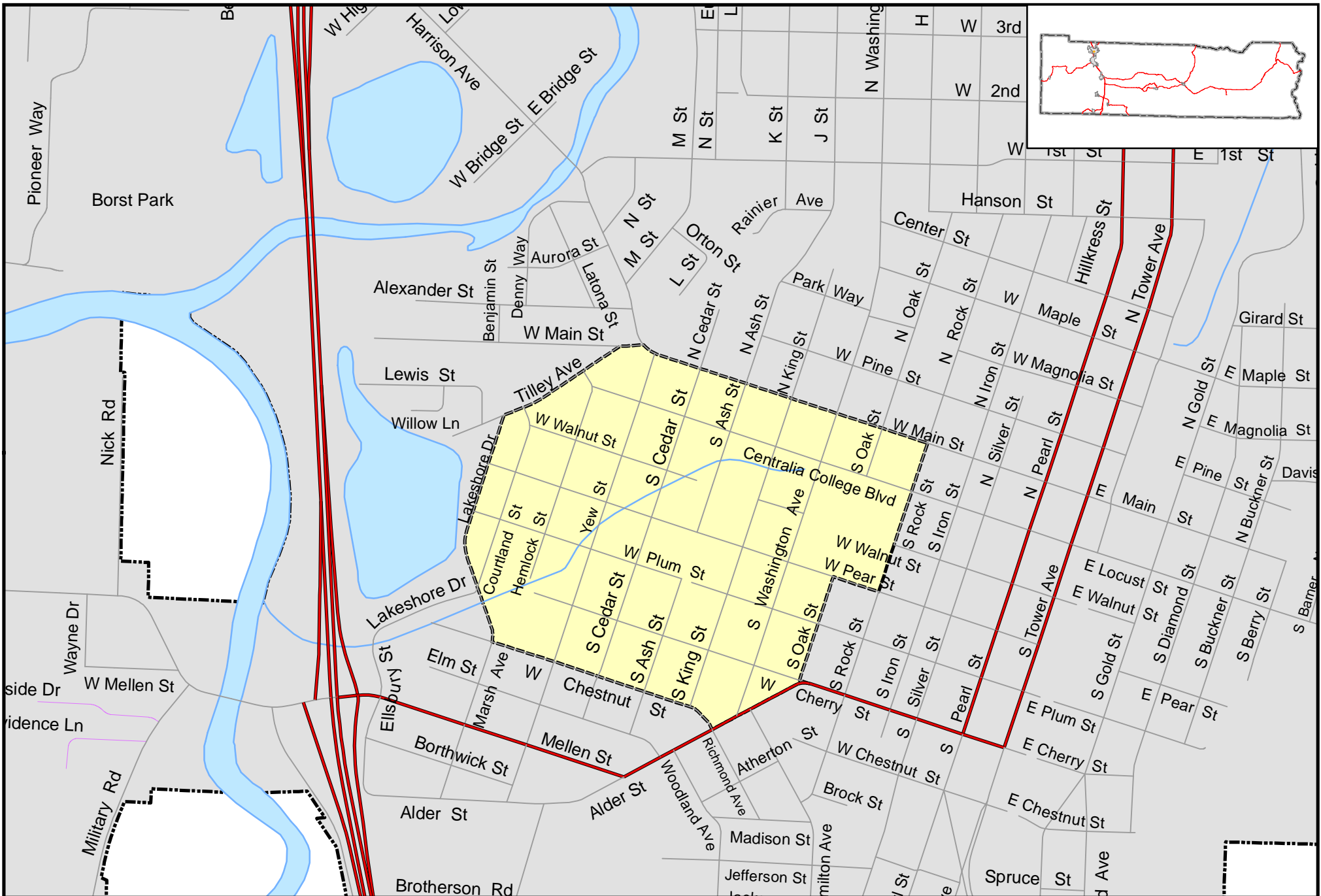


Lewis County Voting Districts

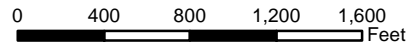
Centralia #4



August 2012



This map was compiled by Lewis County Geographic Information Services. The accuracy of the map has not been verified and should be used for reference purposes only.

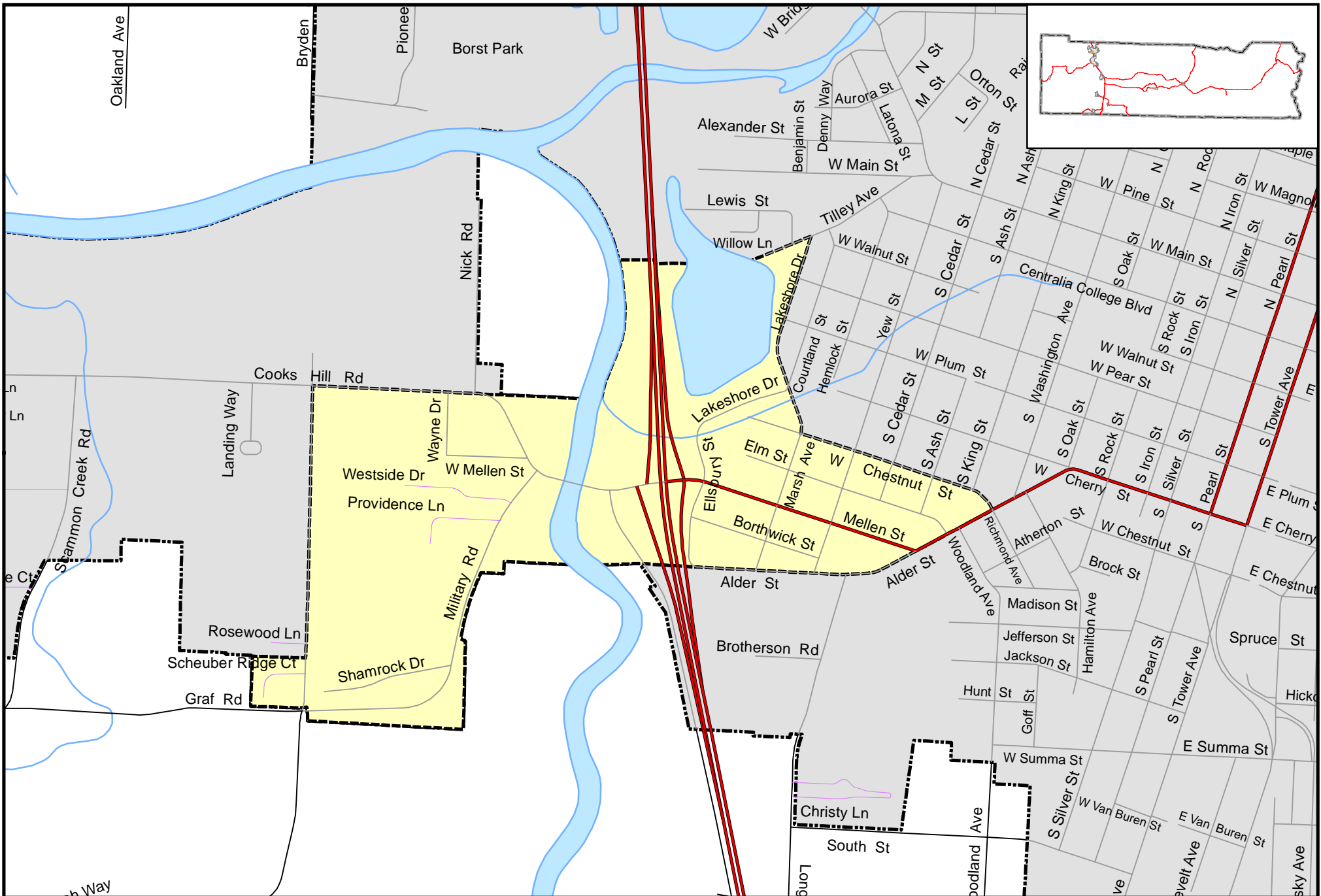


Lewis County Voting Districts

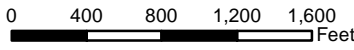
Centralia #5



August 2012



This map was compiled by Lewis County Geographic Information Services. The accuracy of the map has not been verified and should be used for reference purposes only.

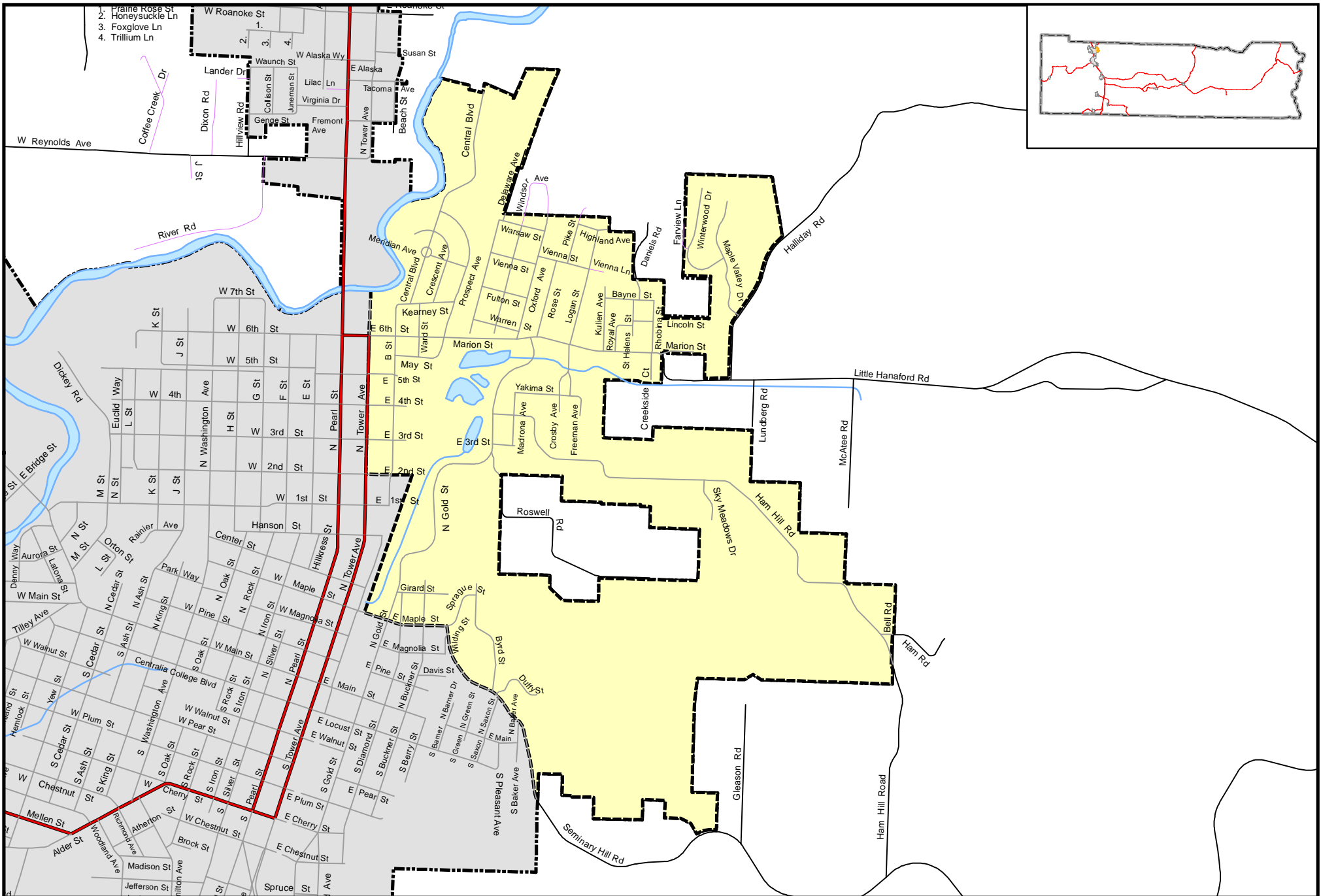


Lewis County Voting Districts

Centralia #7



August 2012



This map was compiled by Lewis County Geographic Information Services. The accuracy of the map has not been verified and should be used for reference purposes only.

0 400 800 1,200,1,600 Feet

Lewis County Voting Districts

Centralia #9



August 2012