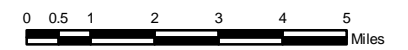


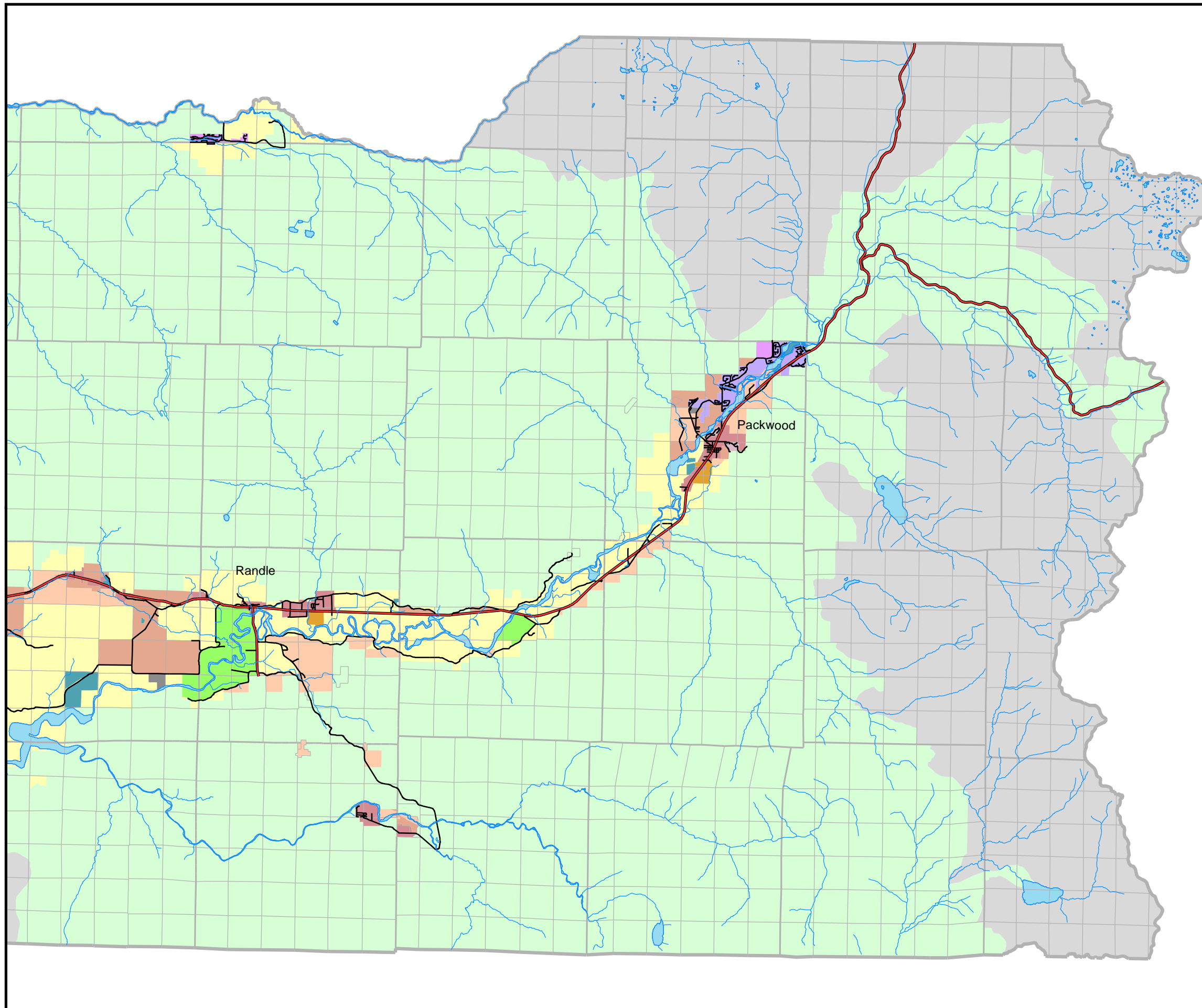
Lewis County, Washington  
 Official Zoning Map

Figure 1c

# Zoning



Adopted and Ratified by the Board of County Commissioners April 4, 2002 pursuant to Ordinance 1179. Amended May 12, 2003, September 8, 2003, December 20, 2004, March 20, 2006, December 10, 2007, December 22, 2008 and April 20, 2009



### Legend

- |                        |                             |
|------------------------|-----------------------------|
| Park                   | PTSA                        |
| City                   | STR - 4                     |
| UGA - City             | STMU                        |
| UGA - County           | STI                         |
| CC                     | RRC-R.5                     |
| FC                     | RRC-R1                      |
| Forest Resource Lands  | RRC-R2                      |
| Mineral Resource Lands | RRC-R10000                  |
| RAI                    | Nat. Park/ Wilderness       |
| RDD - 5                | Agricultural Resource Lands |
| RDD - 10               | Proposed UGA - County       |
| RDD - 20               |                             |