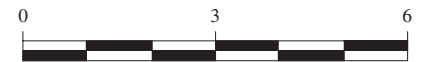










# COMMUNITY FACILITIES

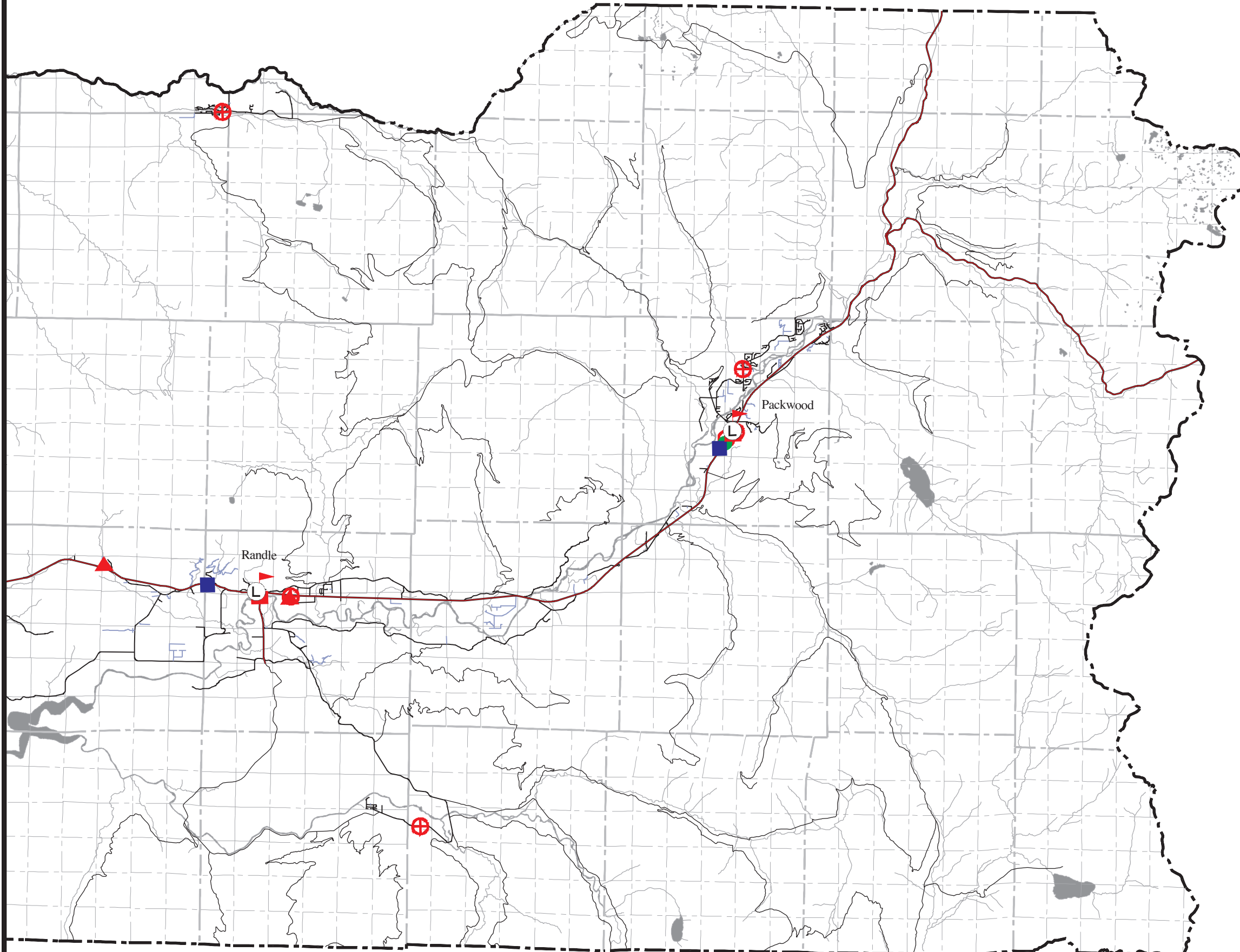
Adopted and Ratified by the Board of County Commissioners April 4, 2002, pursuant to Ordinance 1179.

Miles



## Legend

-  Fire Station
-  Senior Facility
-  County Building
-  Drop Box
-  Hospital
-  Museum
-  Post Office
-  Library



This map was compiled by Lewis County Geographic Information Services. The base map was developed by the Washington State Department of Natural Resources by scanning and digitizing United States Geological Survey 1:24,000 quadrangle maps. The accuracy of the map has not been verified, and it should be used for informational purposes only. Any possible discrepancies should be brought to the attention of Lewis County Geographic Information Services.

Projection: Lambert Conformal Conic  
Datum: 1983 North American Datum  
U.S.G.S. State Plane Zone 5626  
Grid: 50,000 foot State Grid Tics, Washington, South Zone